

CES1101

Single VDSL and 100M Ethernet Embedded Industrial Extender



- Support 1x100M Ethernet copper port and 1xDSL port
- The copper port supports 10/100M auto-sensing, full/half duplex, auto MDI/MDI-X, plug and play
- The DSL port is used for long-distance communication through twisted pair cables, extending the transmission distance of Ethernet port up to 1km
- Comply with the G.993.2 VDSL2 standard that established by the International Telecommunication Union (ITU)
- Support DC9~24V power input and comply with intrinsic safety circuit design standard
- Working temperature from -20 °C to +75 °C

Product Description

CES1101 is a embedded network extender that designed for industrial communication network. This product is used in pairs, with one set as the Central Office (CO) and the other set as the Customer Premises Equipment (CPE). It is a network device that can transmit Ethernet signals over long distances through ordinary cables such as twisted pair cable, telephone line, and coaxial cable. This product supports one 10/100Base-T Ethernet RJ45 port auto-sensing, full/half duplex, auto MDI/MDI-X. It has strong compatibility and can be used for the network upgrading and expansion, provide strong support for network information automation, make the industrial communication smoother, more reliable, and faster.

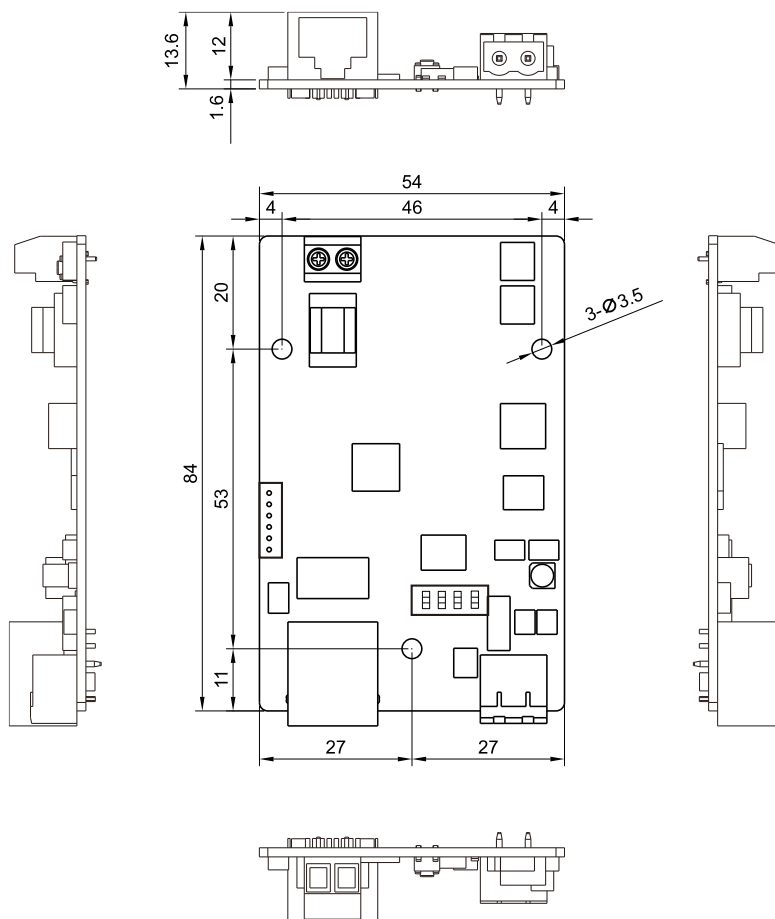
CES1101 supports embedded installation. It adopts high-quality imported chips, with low power consumption and fanless design, and reliable power protection for overcurrent, reverse connection and EMC, suitable for intrinsically safe power supply applications. This product adopts industrial grade quality design solution and has passed strict testing in accordance with industry standards and can adapt to harsh industrial site environments. It can be widely used in video and security monitoring networking systems of large mines.

Technical Specifications

Interface	
DSL Port	1xDSL port, 5.08mm pitch 2-pin terminal block, communication distance up to 1000M (Cable requirement: 2-core twisted pair telephone wire with a diameter >0.5mm ² , and twist distance<25mm)
100M Copper Port	1x10/100Base-T(X) auto-sensing RJ45 ports, full/half duplex, auto MDI/MDI-X
Status LED	Power LED, operation LED, DSL LED, port LED. Support external output of indicator signals
Power Supply	
Input Voltage	DC9~24V
Full load Power Consumption	<1.2W@DC12V
Connection	5.08mm pitch 2-pin terminal block
Physical Characteristics	
Dimensions	84×54×13.6 mm
Installations	Embedded
Weight	About 30g
Working Environment	
Operating Temp	-20℃~+75℃
Storage Temp	-40℃~+85℃
Relative Humidity	5%~95% (non-condensing)

Dimensions

Unit: mm



Ordering Information

Standard Model	100M Copper Port	DSL Port	Input Voltage
CES1101	1	1	DC9~24V



Contact Us

COME-STAR COMMUNICATION(WUHAN) CO., LTD.

Address: Puneng Industrial Park, Fenghuang Garden 1st Road, East Lake High-Tech Development Zone, Wuhan, China.

Tel: +86-027-59257958

Mail: info@come-star.com

Official site: www.come-star.com

Copyright © Come-Star All rights reserved